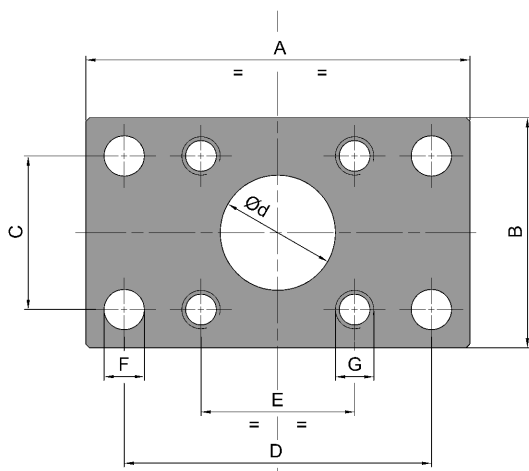
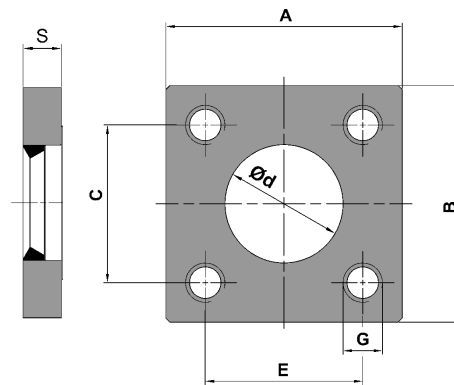


# PIASTRE DI FISSAGGIO SERIE LEGGERA E PESANTE

**DISTITEC**



RETTANGOLARI



QUADRATE

| SERIE LEGGERA | A   | B   | S  | $\varnothing d$ | C   | D   | E   | F    | G   | Profilo | adatta per cuscinetto serie DSTR a catalogo |
|---------------|-----|-----|----|-----------------|-----|-----|-----|------|-----|---------|---|
| DSPTR 0706    | 90  | 50  | 10 | 30              | 30  | 70  | 40  | 8,5  | M8  | **      | 706   |
| DSPTR 0001    | 100 | 60  | 10 | 30              | 40  | 80  | 40  | 10,5 | M10 | 2890    | 001-146-111-961-062                         |
| DSPTR 0002    | 120 | 80  | 15 | 35              | 50  | 90  | 50  | 12,5 | M12 | 2867    | 002-031-147-112-962-070                     |
| DSPTR 0003    | 120 | 80  | 15 | 40              | 50  | 90  | 50  | 12,5 | M12 | 2810    | 003-004-148-149-113-963-078                 |
| DSPTR 0007    | 180 | 120 | 20 | 60              | 80  | 140 | 80  | 17   | M16 | 2891    | .007-009-040-967-016-142-153-108-123        |
| DSPTR 0008    | 180 | 120 | 20 | 55              | 80  | 140 | 80  | 17   | M16 | -       | .008-152-966                                |
| DSPTR 0010    | 200 | 150 | 20 | 60              | 100 | 160 | 100 | 17   | M16 | 2757    | 010-191-154-968-149                         |

|              |     |     |    |    |     |   |     |   |     |      |                                      |
|--------------|-----|-----|----|----|-----|---|-----|---|-----|------|--------------------------------------|
| DSPTR 0706.Q | 50  | 50  | 10 | 30 | 30  | - | 30  | - | M8  | **   | 706                                  |
| DSPTR 0001.Q | 60  | 60  | 10 | 30 | 40  | - | 40  | - | M10 | 2890 | 001-146-111-961-062                  |
| DSPTR 0002.Q | 80  | 80  | 15 | 35 | 50  | - | 50  | - | M12 | 2867 | 002-031-147-112-962-070              |
| DSPTR 0003.Q | 80  | 80  | 15 | 40 | 50  | - | 50  | - | M12 | 2810 | 003-004-148-149 113-963-078          |
| DSPTR 0005.Q | 120 | 120 | 20 | 45 | 90  | - | 90  | - | M16 | 2811 | .005-034-150 115-964-089             |
| DSPTR 0006.Q | 120 | 120 | 20 | 50 | 90  | - | 90  | - | M16 | 2891 | .006-965-151                         |
| DSPTR 0007.Q | 120 | 120 | 20 | 60 | 80  | - | 80  | - | M16 | -    | .007-009-040-967-016-142-153-108-123 |
| DSPTR 0010.Q | 150 | 150 | 20 | 60 | 100 | - | 100 | - | M16 | 2757 | 010-191-154-968-149                  |

| SERIE PESANTE | A   | B   | S  | $\varnothing d$ | C   | D | E   | F | G   | Profilo | adatta per cuscinetto serie DSTR a catalogo |
|---------------|-----|-----|----|-----------------|-----|---|-----|---|-----|---------|---|
| DSPTR 0011.Q  | 165 | 165 | 23 | 80              | 125 | - | 125 | - | M20 | -       | .011  |
| DSPTR 0012.Q  | 190 | 190 | 28 | 100             | 150 | - | 150 | - | M20 | -       | .012  |
| DSPTR 0013.Q  | 220 | 220 | 33 | 110             | 176 | - | 176 | - | M24 | -       | .013  |
| DSPTR 0014.Q  | 250 | 250 | 37 | 120             | 206 | - | 206 | - | M24 | -       | .014  |
| DSPTR 0015.Q  | 280 | 280 | 37 | 150             | 220 | - | 220 | - | M30 | -       | .015  |