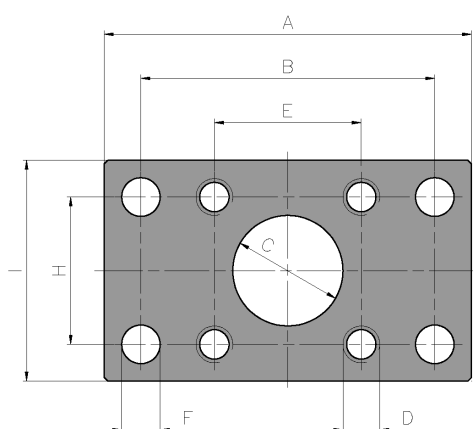
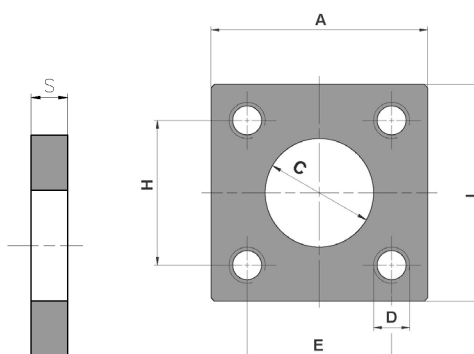


FIXING PLATES LIGHT AND HEAVY SERIES

DISTITEC



RECTANGULAR



SQUARE

LIGHT SERIES	A	B	C	D	E	F	H	I	S	Profile	suitable for DSTR series bearing in catalogue
DSPTR 0706	90	70	30	M8	40	8,5	30	50	10	**	706
DSPTR 0001	100	80	30	M10	40	10,5	40	60	10	2890	001-146-111-961-062
DSPTR 0002	120	90	35	M12	50	12,5	50	80	15	2867	002-031-147-112-962-070
DSPTR 0003	120	90	40	M12	50	12,5	50	80	15	2810	003-004-148-149-113-963-078
DSPTR 0005.A2	160	120	45	M16	60	17	60	100	20	2811	.005-034-150-115-964-089
DSPTR 0007	180	140	60	M16	80	17	80	120	20	2891	.007-009-040-967-016-142-153-108-123
DSPTR 0008	180	140	55	M16	80	17	80	120	20	-	.008-152-966
DSPTR 0010	200	160	60	M16	100	17	100	150	20	2757	010-191-154-968-149

DSPTR 0706.Q	50	-	30	M8	30	-	30	50	10	**	706
DSPTR 0001.Q	60	-	30	M10	40	-	40	60	10	2890	001-146-111-961-062
DSPTR 0002.Q	80	-	35	M12	50	-	50	80	15	2867	002-031-147-112-962-070
DSPTR 0003.Q	80	-	40	M12	50	-	50	80	15	2810	003-004-148-149 113-963-078
DSPTR 0005	120	-	45	M16	90	-	90	120	20	2811	.005-034-150 115-964-089
DSPTR 0006	120	-	50	M16	90	-	90	120	20	2891	.006-965-151
DSPTR 0007.Q	120	-	60	M16	80	-	80	120	20	-	.007-009-040-967-016-142-153-108-123
DSPTR 0010.Q	150	-	60	M16	100	-	100	150	20	2757	010-191-154-968-149

HEAVY SERIES	A	B	C	D	E	F	H	I	S	Profile	suitable for DSTR series bearing in catalogue
DSPTR 0011.Q	165	-	80	M20	125	-	125	165	23	-	.011
DSPTR 0012.Q	190	-	100	M20	150	-	150	190	28	-	.012
DSPTR 0013.Q	220	-	110	M24	176	-	176	220	33	-	.013
DSPTR 0014.Q	250	-	120	M24	206	-	206	250	37	-	.014
DSPTR 0015.Q	280	-	150	M30	220	-	220	280	37	-	.015